

Product Specifications

SOP-05M

Department : Project Department

Writer : Color

Vision : V1.0

Date : 2016/5/10

The Vision History

NO.	Implemented Date	Reasons for alternation	Visions	Writer	Approver
1	2016/5/10	Frist Announced	V1.0	Color	Li

Catalog

1. Basic Information of Products	4
2. Product Specifications	4
3. Product Functionality	5
4. Bom List	7
5. Production Image	7
6. Manner of Packing	8

1. Basic Information of Products

Items	Details	Remark
Name	4G Site enforcement Recorder	
Model	SOP-05M	
Target Customer	The relevant law enforcement departments of the government	
Application	Real-time video transmission, the team unified scheduling, remote support and other allegations of integrated functions can be achieved, by wearing a law enforcement recorder to send back the information to the platform	

2. Product Specifications

No.	Items	Details	
01	Reliability	IP Level	the IP67 protection level in GB4208-2008
		Applicable Environment	Temperature -30℃~50℃, Humidity<90%
		Anti-drop height	2M
02	Structure	Size	100mm×60mm×24.4mm (External device not included)
		Weight	167g (Only device body)
		Keystroke	7 buttons on both side of the machine, include camera key, Video key, record key and other keys
03	Display Performance	Display Screen	2.0 inches TFT LCD. Full field white test, the maximum brightness is 600cd/m2. The brightness ratio of the whole white field test and the whole black field test is 428:1
		Touch Window	Capacitive touch screen. Waterproof and the new operation model with glove
		Field of View	Horizontal field of view angle >120°
04	Video Image Parameters	Video Input	Camera Resolution of built-in camera is 1920*1080; Camera resolution of external camera resolution is 1920*1080
		Video Transmission	480P under 4G network, >25 frames
		Video Record	Color video image, Video resolution is 1920×1080, 1280×720 can be selected, The video frame rate is 30/s
		Video Format	MP4
		Photo Format	Maximum pixel value ≥ 16.6 million, Actual effective pixels is 4608*3456, JPG as a file format
05	Camera Aspect	Sensor Type	CMOS
		Shutter	Electronic shutter
		Infrared Night Vision	Infrared night vision lights can be switched by filter High power infrared lamp, Aluminum substrate for heat dissipation
		White Balance	Automation

Product Specifications

		Flashlight	Support
		Laser Light	Support
		Light detection	A built-in chip used to detect light
06	location abilities	Satellite Positioning	Domestic function combine GPS and Beidou Positioning Overseas support Galileo and GLONASS system
07	Wireless Transmission	3G/4G Real-time Transmission	TDD LTE: Band38 (2570-2620M) Band39 (1880-1920M)) Band40 (2300-2400M) Band41 (2496-2690M) FDD LTE: Band1 (UL:1920-1980M,DL:2110-2170M) Band3 (UL:1710-1785M,DL:1805-1880M) WCDMA: Band1 (UL:1920-1980M,DL:2110-2170M) Band2(UL:1850-1910M,DL:1930-1990M) Band5(UL:824-849M,DL:869-894M) TDSCDMA: Band34 (2010-2025M) Band39 (1880-1920M) EVDO: BC0 (UL:824.025-848.985 M DL:869.025-893.985 M)
		WIFI	WIFI, Support 802.11b/g/n
		BT	BT 4.0
08		Compass	Built in magnetic chip to achieve compass function
09		Data Interface	Mini USB 2.0
10		Charging Mode	Special adapter, Charging with USB or Vehicle, DC 5V,1000mA
11		Battery	Battery can be replaced 4.35V high voltage electric core, 3050mAh
12		Storage	Built-in TF memory card space is 32G, the recording time is not less than 8 hours, and at the same time the storage is not less than 8 million 3000 pixel pictures, RAM 1GB, TF card up to 128GB
13		Operating System	Andriod 5.1

3. Product Functionality

No.	Items	Details
01	Photographing Function	Press single button capture photograph in the process of video does not affect the normal video
02	Wireless Transmission Function	The device has the function of transmitting the video under the whole network 4G wireless communication mode
03	WIFI Function	The device supports WIFI transfer function
04	Global Positioning System	Domestic function combine GPS and Beidou Positioning, the device can receive satellite data and upload the position information to the command center in real time through the built-in communication module Overseas support Galileo and GLONASS system
05	Projection Screen	The device screen content can be projected onto a device that supports

Product Specifications

	Function	WLAN projection (Smart TV or smart boxes, etc.)
06	Infrared Night Vision Function	The outline of the human body can be seen in effective distance 10M The characters in the picture of the facial features can be recognized in the effective shooting distance 3M
07	Browsing, retrieving and playing back	The video and audio, photo and other information saved in the device can be browsed, retrieved and replayed according to the time
08	Character Superimposing Function	Information can be automatic overlay in the recorded video and the pictures, for example time, date, user number, GPS location information
09	Display Function	The device can display battery charge, charge status, system time, storage margin and other information. Boot, sound recording, video state has light indicator, the boot state indicator is green, recording status indicator is shown in red, yellow lights are recording.
10	Time Correction Function	When the device connected to the host computer, the time can be automatically corrected with the time server through the management software. The device can't modify the time
11	Abnormal Alarm Function	The device has the alarm function of battery under pressure, storage overflow. After the battery voltage alarm, the remaining battery capacity can ensure the normal recording machine not less than 5min, but not more than 30min
12	Data Integrity	The device can store the data and protect stored data, stored data is not removed or covered by this machine or unauthorized host computer. The device in the abnormal problems can be restarted, the stored data will not be lost or damaged after the restart.
13	Log Recording Function	The device can record the running status and operation information, just like the on / off time, video time, recording time and photographic operation information. Log reading and cleaning can only be done through the host computer system management software.
14	Special Management Software	A. Hierarchical management and authorization authentication. B. You can set the basic parameters, such as the system time, password, and the grading system. C. You can upload, cancel and query the stored files in the device. D. This device can store and retrieve information according to the number and time of the information. E. The video resolution and frame rate can be set F. The users and user department can be set G. This device has the function of automatic data import. When the product is connected with the authorized host computer through the communication interface, the internal video and audio information, audio information, photo and log data, user information, file type, upload time can be automatically uploaded.
15	Color Reduction	The picture color is similar with the body color when display or playback the video. The device has the function of automatic infrared filter
17	Information Upload	All the information can be upload, just like the recorded video audio, audio, photos, internal time and memory capacity information, user

Product Specifications

		information and use of personal information
18	Information Download / Receive	A. The information used to calibrate the local calendar clock should be download or received, like "year, month, day, hour, minute and second" B. Some information for Setting up the working mode of the device, such as reading the record data, deleting the control instruction of the recorded data and so on C. Video and photo resolution, user information
19	Intercom Device	The device can be connected to the intercom and provide pickups and speakers for intercom. This device can be compatible with digital and analog intercom.
20	External Camera	OV8865

4. BOM List

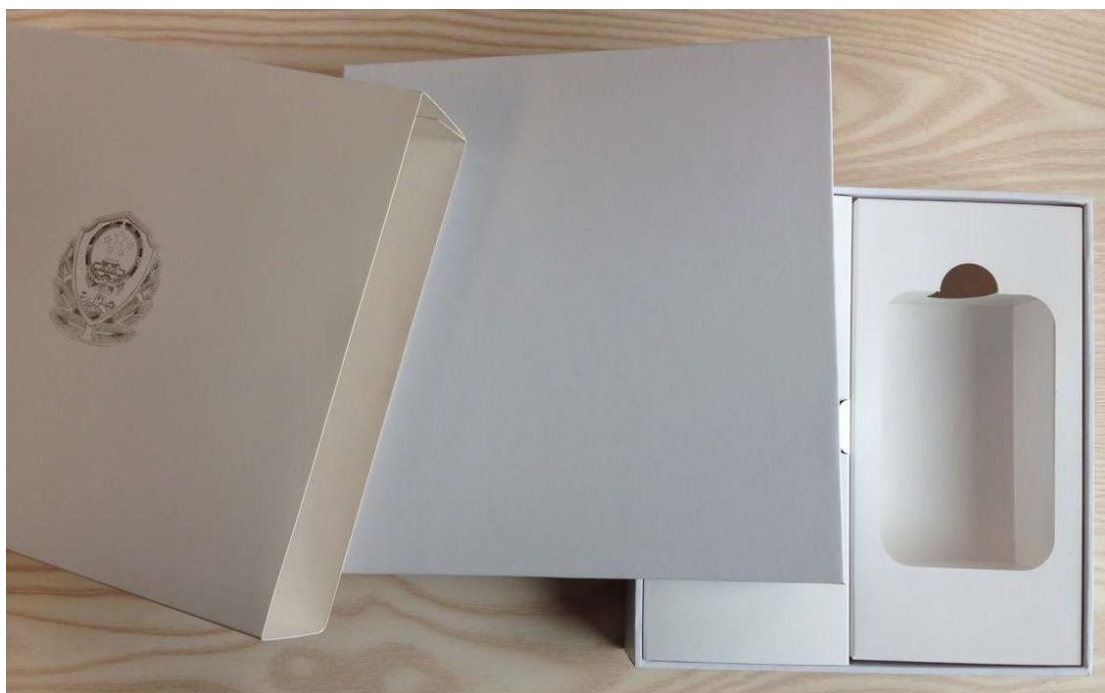
No.	Parts	Qty	Remark
1	4G Site enforcement Recorder	1	
2	5V 2A Adaptor	1	
3	5V 1A Charging Device	1	Optional
4	3050mAh Battery	1	
5	USB Cable	1	
6	CD(Driver\ Collection client)	1	Optional
7	Clip	1	
8	User Manual	1	
9	Warranty Card	1	
10	Certificate of Qualification	1	
11	External Camera	1	Optional
12	Gift Box	1	
13	Sleeve	1	

5. Production Image



6. Manner of Packing

Packing box



Product packaging details



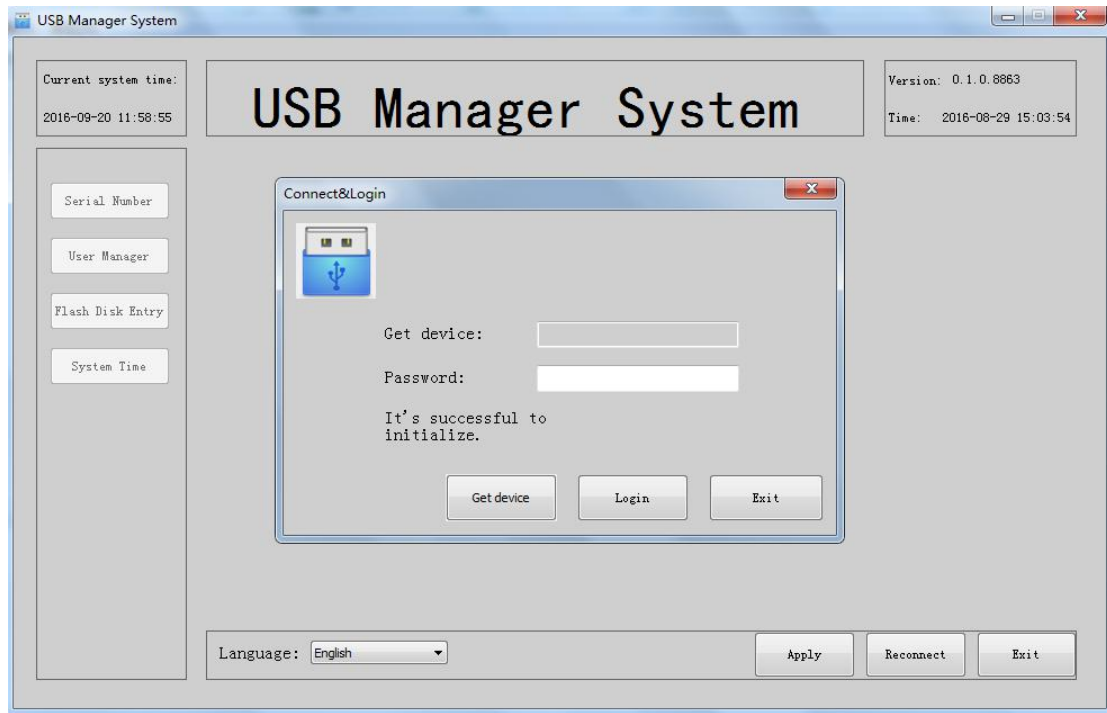
Standard Accessories:

- 1.Camera x 1
- 2.USB Charger x 1
- 3.Shoulder Mount x 1
- 4.Manual x 1
- 5.USB cable x 1
- 6.Battery x 1

Optional:

- 1.Charging Base x 1
- 2.External Mini Camera x 1

PC Driver Interface



Server

